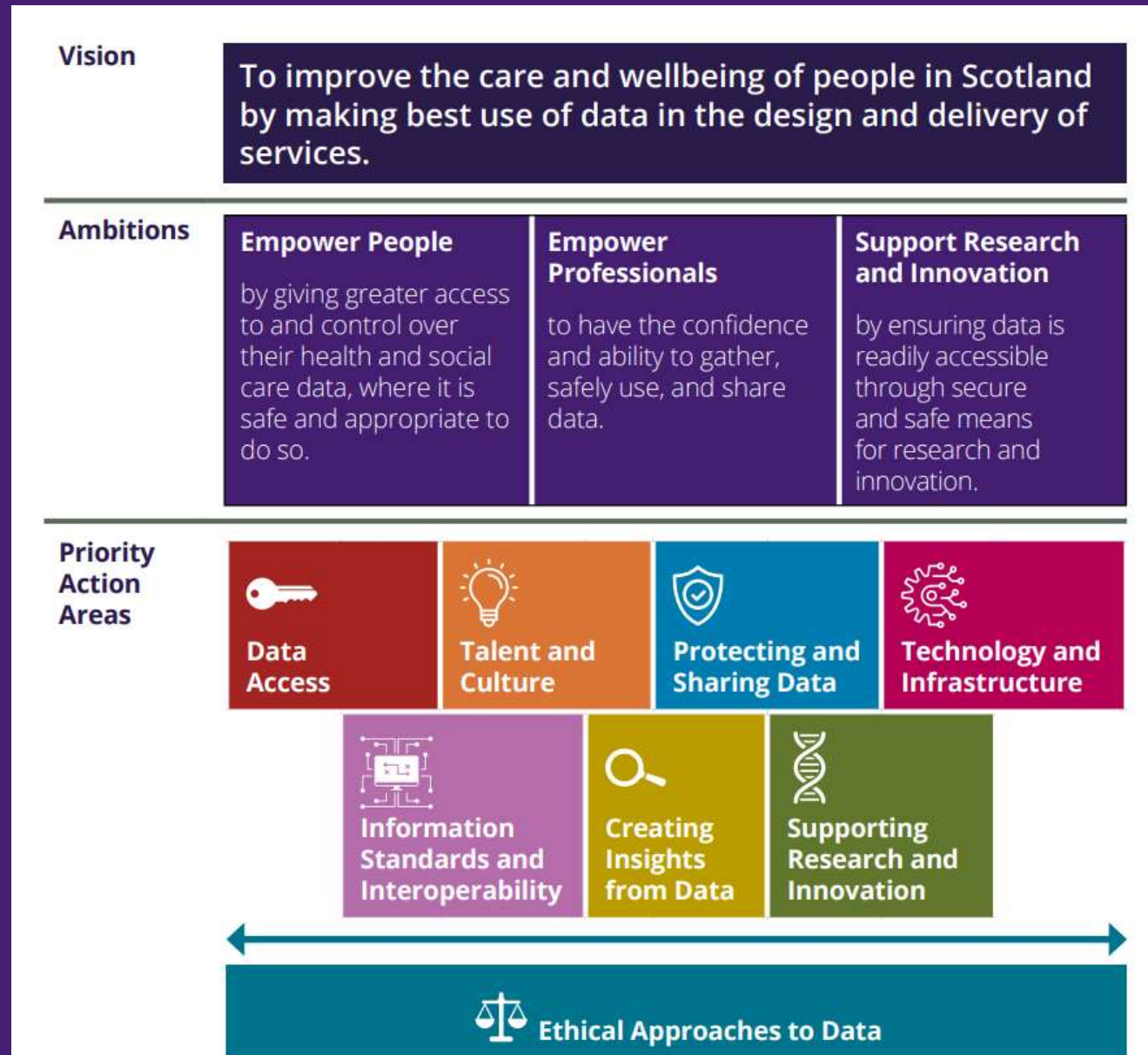


Overall structure



Data access

| Our Commitments | Who is it for? |
|--|---------------------------------|
| <p>When opening up access to data for individuals and writing publications about health and social care data, we will describe data and information using plain language.</p> | Public |
| <p>We will seek to ensure that digital means of accessing data allow those who do not have the desire/capacity/capability to access their own health and social care data to delegate access. We will do this in line with established processes and legislation for determining when proxy access is appropriate.</p> | Public |
| <p>Our analytic communities in Scottish Government, Local Government and PHS will expand access to analysis and insight of health and social care data by following an open government approach to accessing data. This will enable people to be better informed of their care and to help manage public expectations.</p> | Public Research & Innovation |
| <p>As set out in Scotland's Digital Strategy, we will make more of our health and social care data available openly where it is safe, practical and lawful to do so. This will include providing an improved framework for open data to enable non-public sector organisations to access data in a safe way. This will support linking and usage of data to develop new insights and support innovation.</p> | Research & Innovation |

Talent and culture

| Our Commitments | Who is it for? |
|---|----------------|
| <p>We will build confidence in using data by ensuring all staff possess the essential data and digital skills they need to do their job. This includes providing consistent and tailored data and digital skills learning and development for all health and social care staff, incorporating blended training approaches as necessary.</p> | Professionals |
| <p>We will work with and support senior leaders to gain and further develop the skills to embed digital technology and data literacy across their organisations through our Digital Leadership programmes.</p> | Professionals |
| <p>We will ensure that there is appropriate level of leadership, skills and capacity, and an appropriately trained and resourced specialist workforce with career development opportunities across the system, to support the design and delivery of enhanced digital services.</p> | Professionals |
| <p>We will ensure that all workforce development programmes include data and digital.</p> | Professionals |
| <p>We will invest in our specialist workforce by developing appropriate tools and training resources that are relevant to job roles.</p> | Professionals |
| <p>Our Digitally Enabled Workforce programme will work with our universities and colleges to shape the future workforce by ensuring curricula prepare students for a digitally enabled health and social care environment, and produces graduates of the future for whom digital is a core skill.</p> | Professionals |

Protecting and sharing data

| Our Commitments | Who is it for? |
|--|--|
| We will engage effectively with the public, and health and social care delivery partners, to co-produce improvements and bring greater clarity to the current federated IG model. | Public Professionals |
| The CCoE will lead the continual improvement of the security of NHS systems and grow our specialist workforce by focusing on key enablement pillars including centralised security, 24/7 monitoring, threat hunting, incident response and training and awareness. | Professionals |
| Secure data environments must continually improve cyber security controls to ensure an appropriate level of authorised access to data at all times, as set out in the Cyber Resilience Framework. | Professionals |
| The Scottish Government Health Competent Authority (SHCA) will continue to assess annually the cyber resilience practices of all NHS Scotland Health Boards. We will use the findings from the yearly audits to set strategic direction, with a focus on mitigating practices for the areas of greatest risk. | Professionals |
| We will enhance our cyber security tools and responses and actively promote security controls and regulatory requirements. | Professionals |
| The Scottish Government will continuously review and refresh national guidance and codes of practice for the governance of information and data, in topic areas such as: confidentiality, records management, information sharing, privacy by design, ethics, security, and others including charters for safe havens, and patient rights. For example, Charter for Safe Havens in Scotland: Handling Unconsented Data from National Health Service Patient Records to Support Research and Statistics. - gov.scot (www.gov.scot) | Professionals Public Research & Innovation |

Technology and infrastructure

| Our Commitments | Who is it for? |
|---|--|
| <p>We will embed a climate-considered approach to our management of health and social care data.</p> | <p>Public Professionals</p> |
| <p>The Scottish Government, COSLA, and partners including the Scottish Innovation Centres will work collectively to ensure that health, social care and social work benefit from innovations based on IoT and AI.</p> | <p>Public Professionals</p> |
| <p>We will ensure that clinical safety and security of our systems are embedded throughout, noting that all software classed as a medical device must be compliant with current UK regulations. This means ensuring we provide the public and professionals with the assurance they need that digital technologies are used to deliver care in a safe manner.</p> | <p>Public Professionals</p> |
| <p>We will collect data once, and support appropriate access and use multiple times.</p> | <p>Professionals</p> |
| <p>We will promote a continuous improvement approach to improving the quality and completeness of data as well as making better use of the data we already have.</p> | <p>Research & Innovation Professionals</p> |

Information standards and interoperability

| Our Commitments | Who is it for? |
|---|--|
| <p>We will put the FAIR data principles and quality data at the heart of all data work in health and social care.</p> | Professionals |
| <p>We will work with organisations across the health and social care sector to ensure information standards are fit for purpose, and horizon-scan for good practice and developments in standards; for example, Open Referral UK and SAVVI standards. As we do so, we will always strive to recognise local needs and the varying implementation challenges in both health and social care.</p> | Professionals |
| <p>We will set clear information standards when specifying new system requirements, with system providers as part of programme procurement and implementation.</p> | Professionals Research & Innovation |

Creating insights from data

| Our Commitments | Who is it for? |
|--|-------------------------|
| We will use modern technology to support the timely analysis and understanding of Scotland's Health & Social Care system. | Professionals |
| We will take a more joined-up approach to funding and commissioning, ensuring analytic communities are joined-up. This includes encouraging communities of practice for the sharing of learning and ways of working. | Professionals |
| We will invest in the people we need to help deliver the data, growing our workforce to use timely analysis to deliver the intelligence and insight that is needed to improve health and wellbeing in Scotland. | Public Professionals |
| When publishing analysis, we will always ensure we help readers to understand the key insights being derived from the analysis of data. | Public Professionals |
| We will support the sharing of data analysis and insights across the public, independent and third sector organisations to deliver improved services. | Public Professionals |
| We will be smart in our approach to creating insight from data, making the most of the data already available. We will take a collaborative approach to learning, sharing, and developing our data and insights. | Professionals |

Supporting research and innovation

| Our Commitments | Who is it for? |
|---|--|
| <p>We will seek to maximise the opportunities for data-driven research and innovation, with broad public support, to accelerate realisation of the public benefits.</p> | <p>Research & Innovation Public</p> |
| <p>We will openly demonstrate and describe the uses, safeguards, and benefits of the use of health and care data for research and innovation.</p> | <p>Research & Innovation Public</p> |
| <p>We will support access to health and social care data through trusted research and innovation environments, such as Scotland's 'Safe Havens', with appropriate approval processes providing assurance that data is used in line with ethical principles.</p> | <p>Research & Innovation Public</p> |
| <p>We will consider the use of data for research and innovation in the design of all new developments set out in this Strategy to maximise the opportunities and public benefits.</p> | <p>Research & Innovation Professionals</p> |

Ethical Approaches to Data

- Beneficial
- Responsible
- Accountable
- Insightful
- Inclusive
- Necessary
- Observant
- Widely participatory

